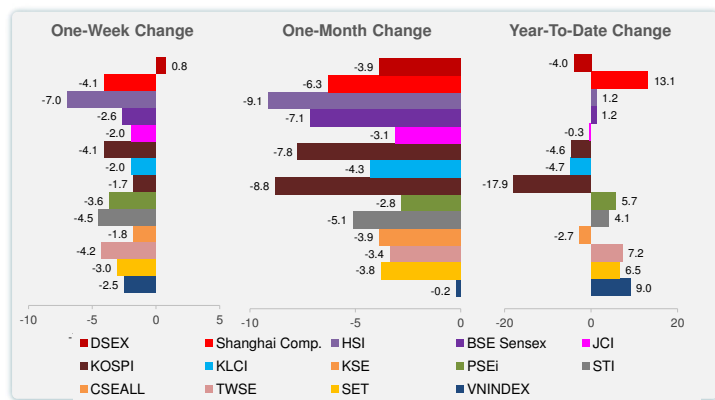
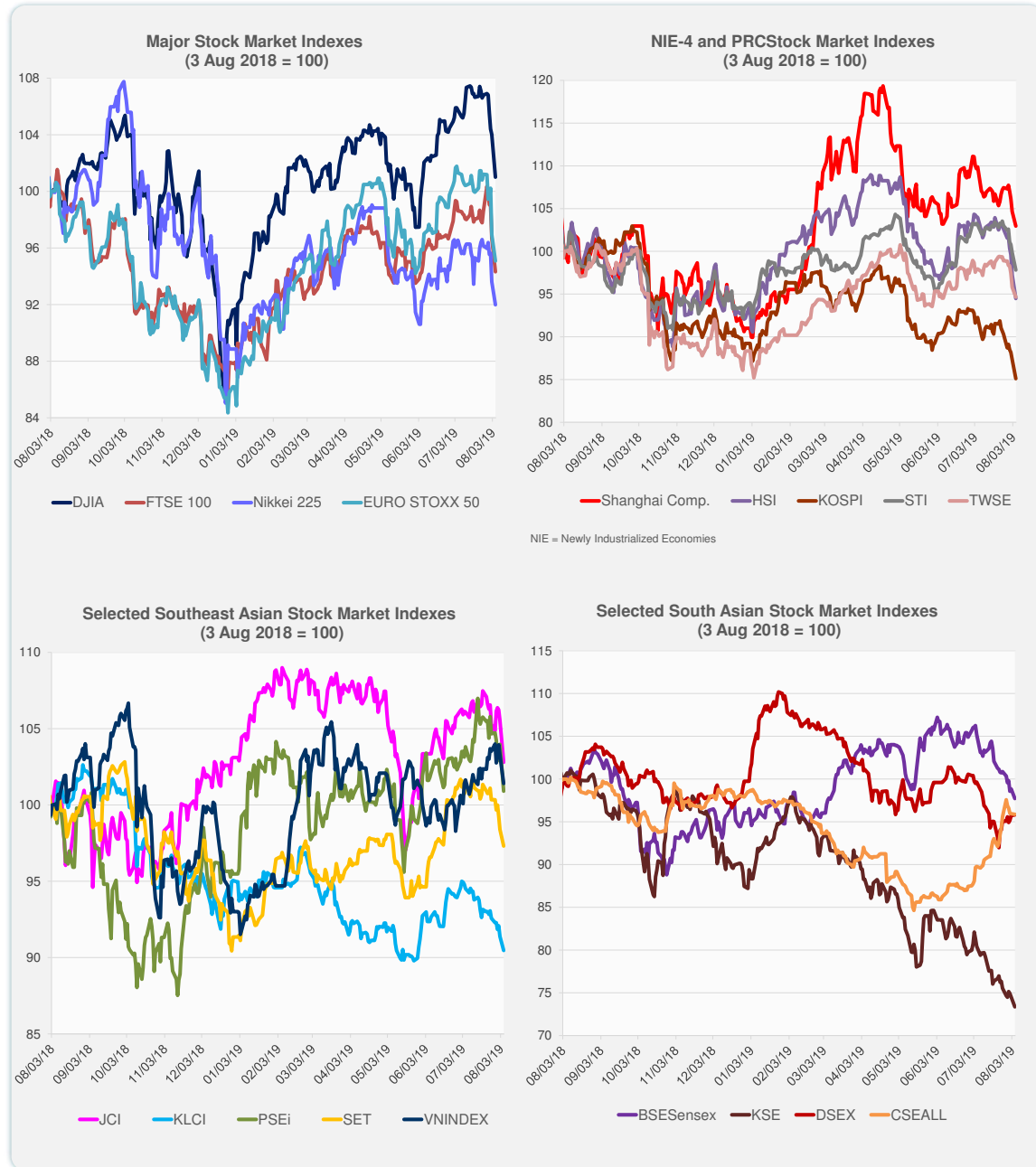


	Latest Closing	% change from Previous Day	% change from 01-Jan-19
US Dow Jones Ind Avg	25,717.74	-2.90	10.25
US NASDAQ	7,726.04	-3.47	16.44
US S&P 500	2,844.74	-2.98	13.48
UK FTSE 100	7,223.85	-2.47	7.37
EURO STOXX 50	3,310.93	-1.93	10.31
Japan NIKKEI 225	20,720.29	-1.74	3.52
Bangladesh DSEX	5,172.86	0.06	-3.95
PRC Shanghai Comp.	2,821.50	-1.62	13.14
Hong Kong, China HSI	26,151.32	-2.85	1.18
India BSE Sensex	36,699.84	-1.13	1.23
Indonesia JCI	6,175.70	-2.59	-0.30
Korea, Rep. of KOSPI	1,946.98	-2.56	-4.61
Malaysia KLCI	1,610.41	-1.01	-4.74
Pakistan KSE 100	31,180.80	-1.53	-17.94
Philippines PSEi	7,890.02	-2.95	5.68
Singapore STI	3,194.51	-2.04	4.10
Sri Lanka CSEALL	5,889.67	-0.09	-2.69
Taipei, China TWSE	10,423.41	-1.19	7.16
Thailand SET	1,665.99	-1.11	6.53
Viet Nam VNINDEX	973.15	-1.81	9.03

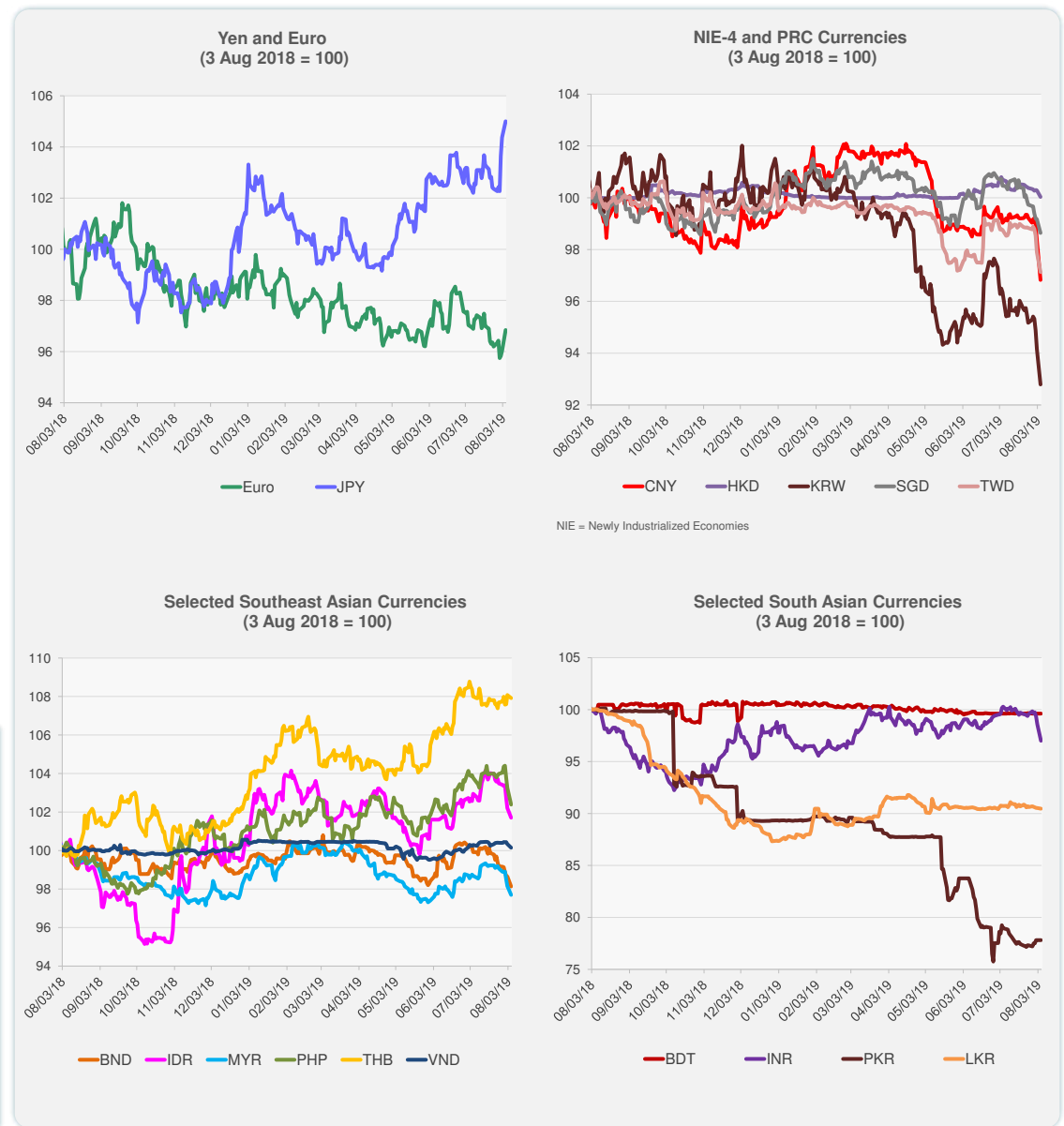
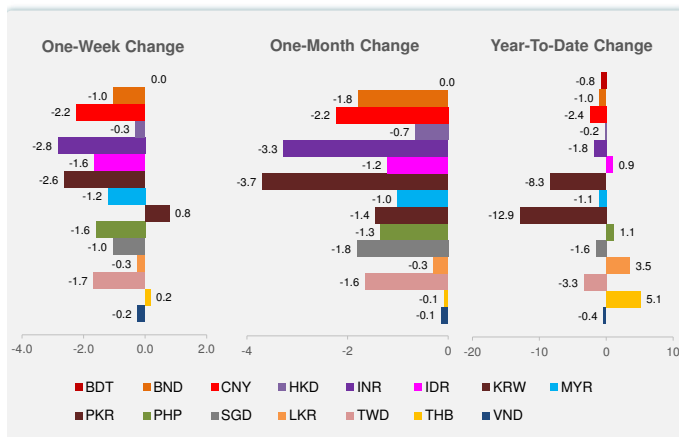


Source: Bloomberg.



Source: Bloomberg.

	Latest Closing	% change from Previous Day	% change from 01-Jan-19
Euro	0.89	0.86	-2.29
Japanese yen (JPY)	105.95	0.60	3.58
Bangladeshi taka (BDT)	84.53	0.00	-0.77
Brunei dollar (BND)	1.38	-0.53	-1.00
Chinese yuan (CNY)	7.05	-1.56	-2.44
Hong Kong dollar (HKD)	7.85	-0.25	-0.19
Indian rupee (INR)	70.74	-1.60	-1.84
Indonesian rupiah (IDR)	14,255.00	-0.49	0.95
Korean won (KRW)	1,215.32	-1.46	-8.35
Malaysian ringgit (MYR)	4.18	-0.47	-1.05
Pakistan rupee (PKR)	159.43	0.00	-12.90
Philippine peso (PHP)	51.89	-0.84	1.11
Singapore dollar (SGD)	1.38	-0.53	-1.55
Sri Lanka rupee (LKR)	176.65	-0.07	3.51
Taipei,China NT dollar (TWD)	31.63	-0.78	-3.34
Thai baht (THB)	30.81	-0.15	5.10
Vietnamese dong (VND)	23,270.00	-0.19	-0.41



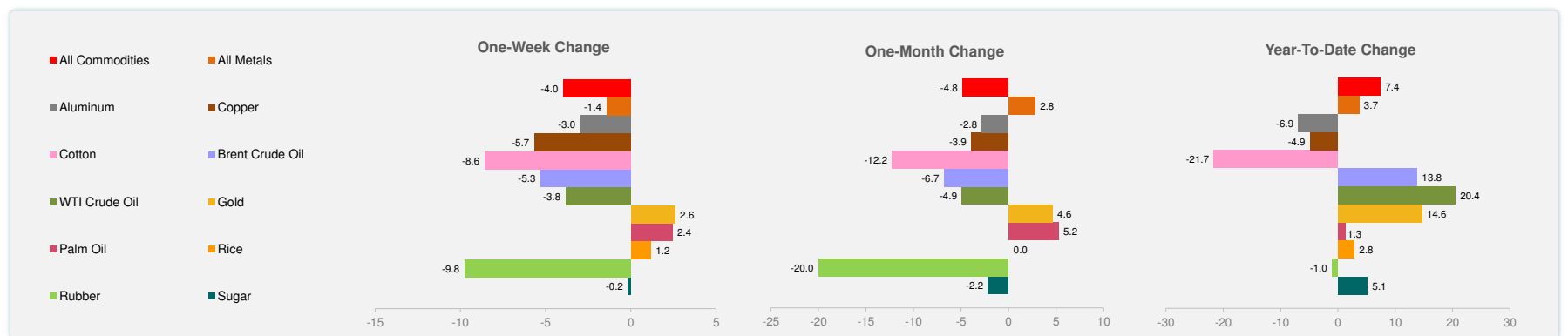
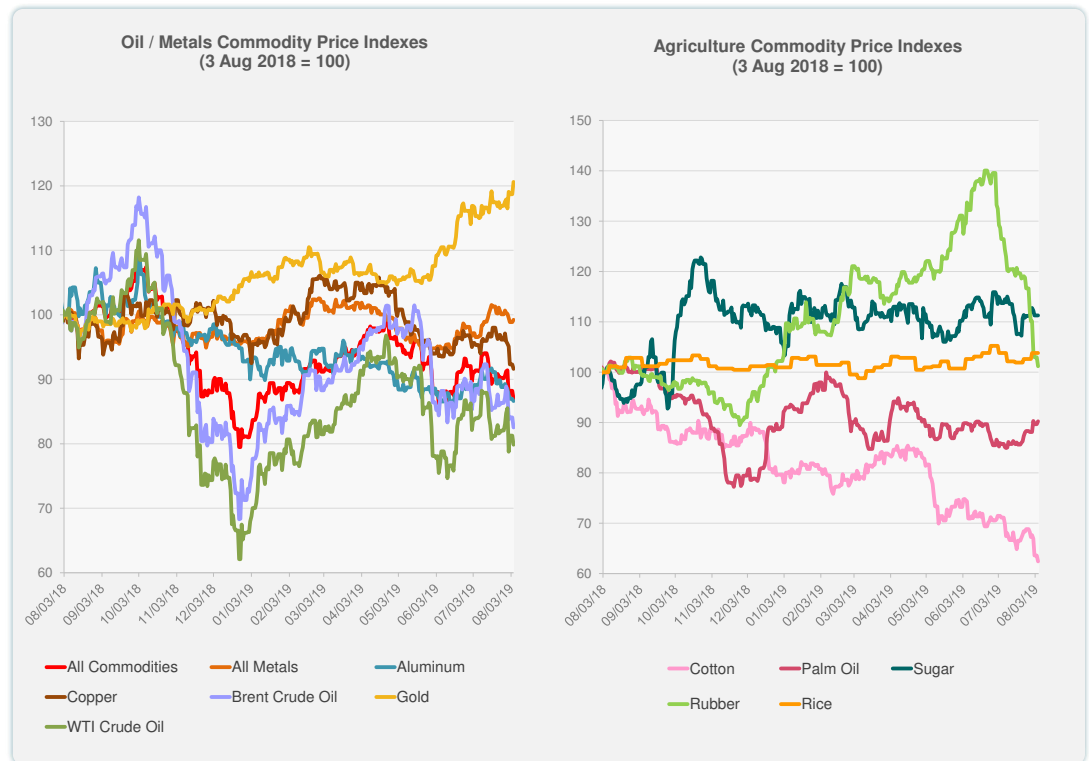
Note: Negative/Decreasing values indicate depreciation of local currency, and positive/increasing values indicate appreciation.  
Source: Bloomberg.



Source: Bloomberg.

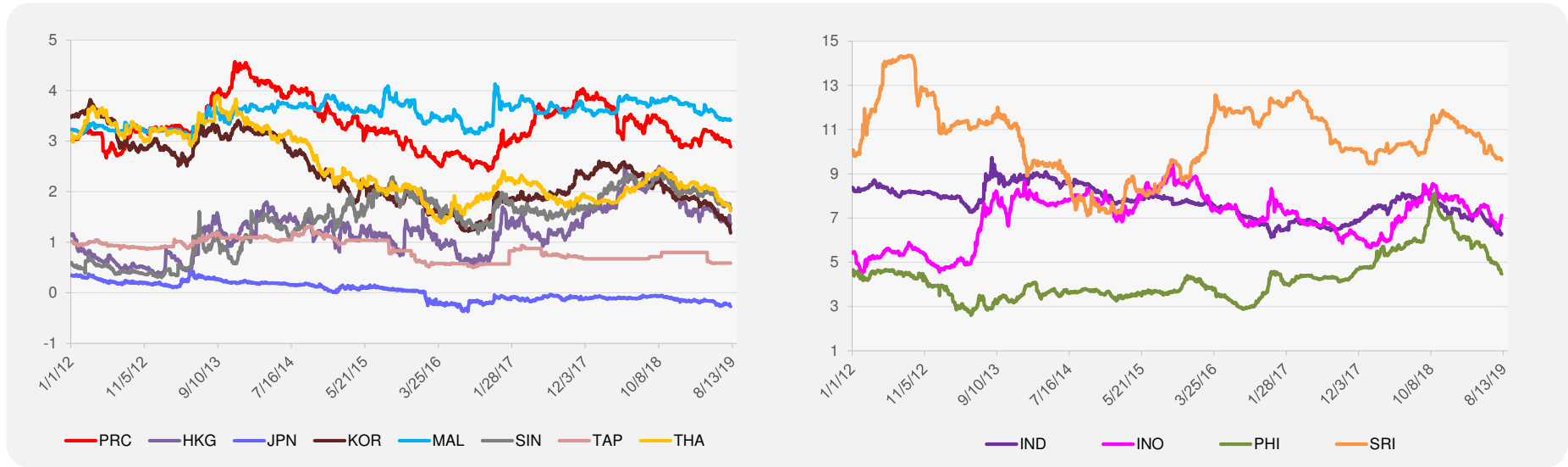
	Unit	Latest Closing	% change from Previous Day	% change from 01-Jan-19
S&P All Commodities	US\$	401.90	-1.41	7.37
S&P All Metals	US\$	211.69	0.37	3.65
Aluminum	US\$/metric ton	1,734.25	-0.39	-6.90
Copper	US\$/metric ton	5,660.25	-0.76	-4.85
Cotton	US cents/lb	54.41	-1.86	-21.66
Brent Crude Oil	US\$/barrel	60.10	-1.85	13.78
WTI Crude Oil	US\$/barrel	54.69	-1.74	20.44
Gold	US\$/troy oz	1,463.78	1.61	14.62
Palm Oil	US\$/metric tonne	478.40	0.64	1.28
Rice <sup>1</sup>	US\$/metric ton	436.00	0.00	2.83
Rubber <sup>2</sup>	US\$/kg	147.00	-1.74	-1.01
Sugar	US cents/lb	12.74	0.00	5.12

<sup>1</sup> Latest closing price from 31 July 2019.  
<sup>2</sup> Singapore Exchange, Ribbed Smoked Sheet Rubber.

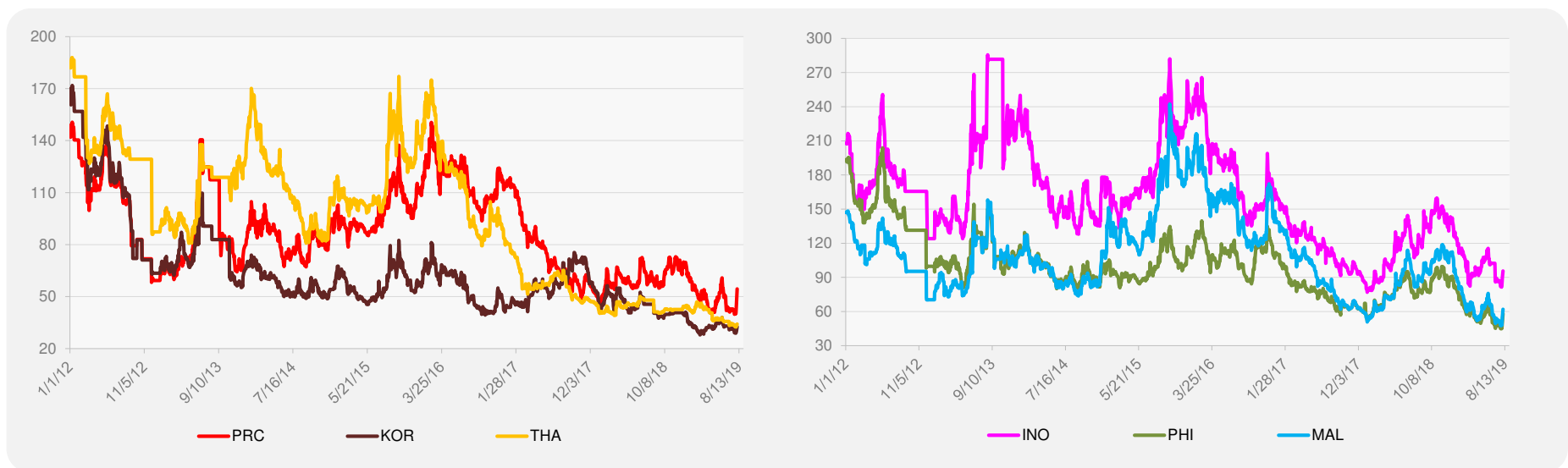


Source: Bloomberg.

### 5-YEAR LOCAL CURRENCY GOVERNMENT BOND YIELDS (%)



### 5-YEAR CREDIT DEFAULT SWAP<sup>1</sup>



<sup>1</sup> In USD and based on sovereign bonds.  
Source: Bloomberg.